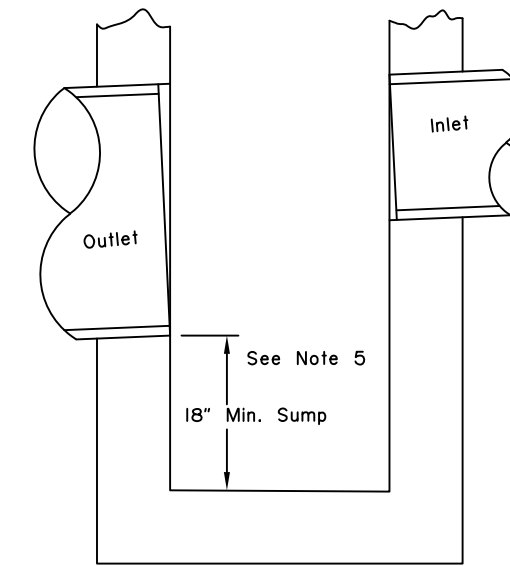
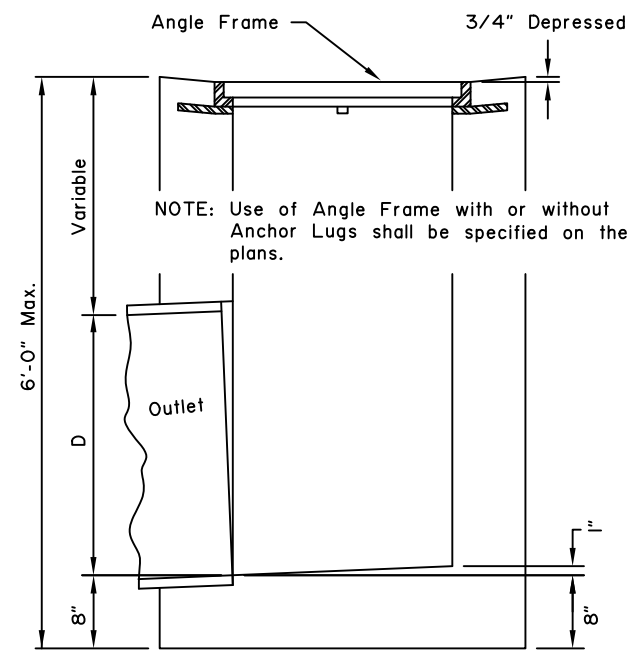
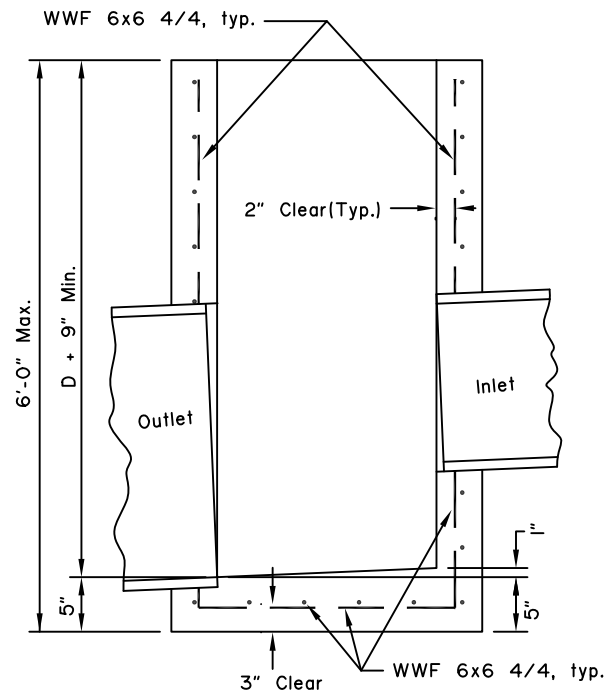
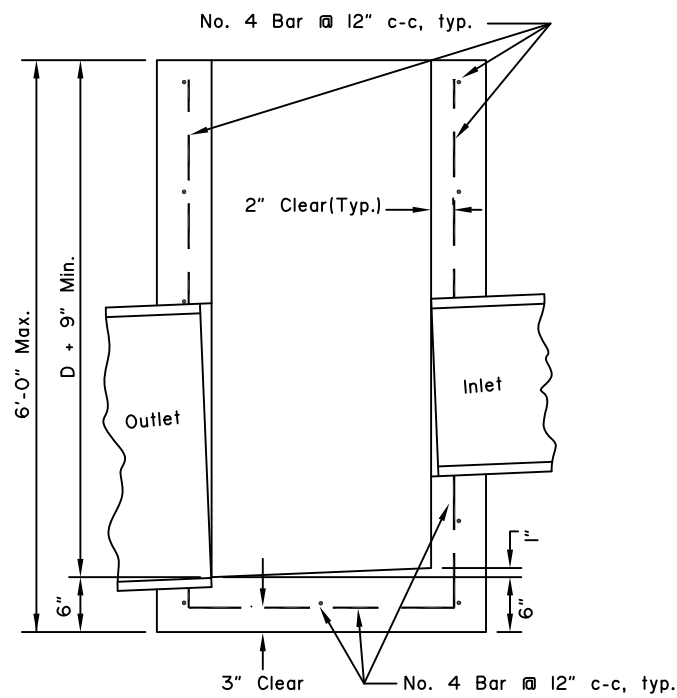


GENERAL NOTES:

1. Install inlet boxes parallel to the curb line.
2. The plans will indicate which inlet boxes require a sump.
3. Shape floors to drain.
4. Use Grade 40 minimum reinforcing steel.
5. The plans will indicate which inlet boxes require sumps.



SUMP DETAIL

REINFORCED
CAST IN PLACE

PRECAST

FIELD INLET BOX
CAST* IN PLACE

TYPE "A" CONCRETE INLET BOXES

* May be Precast or Reinforced Cast-In-Place Box.

State of Alaska DOT&PF
ALASKA STANDARD PLAN

TYPE "A"
INLET BOX

Adopted as an Alaska Standard Plan by: *Kenneth J. Fisher*
Kenneth J. Fisher, P.E.
Chief Engineer

Adoption Date: 02/08/2019

Last Code and Stds. Review By: Date:

Next Code and Standards Review date: 02/08/2029

NOT TO SCALE