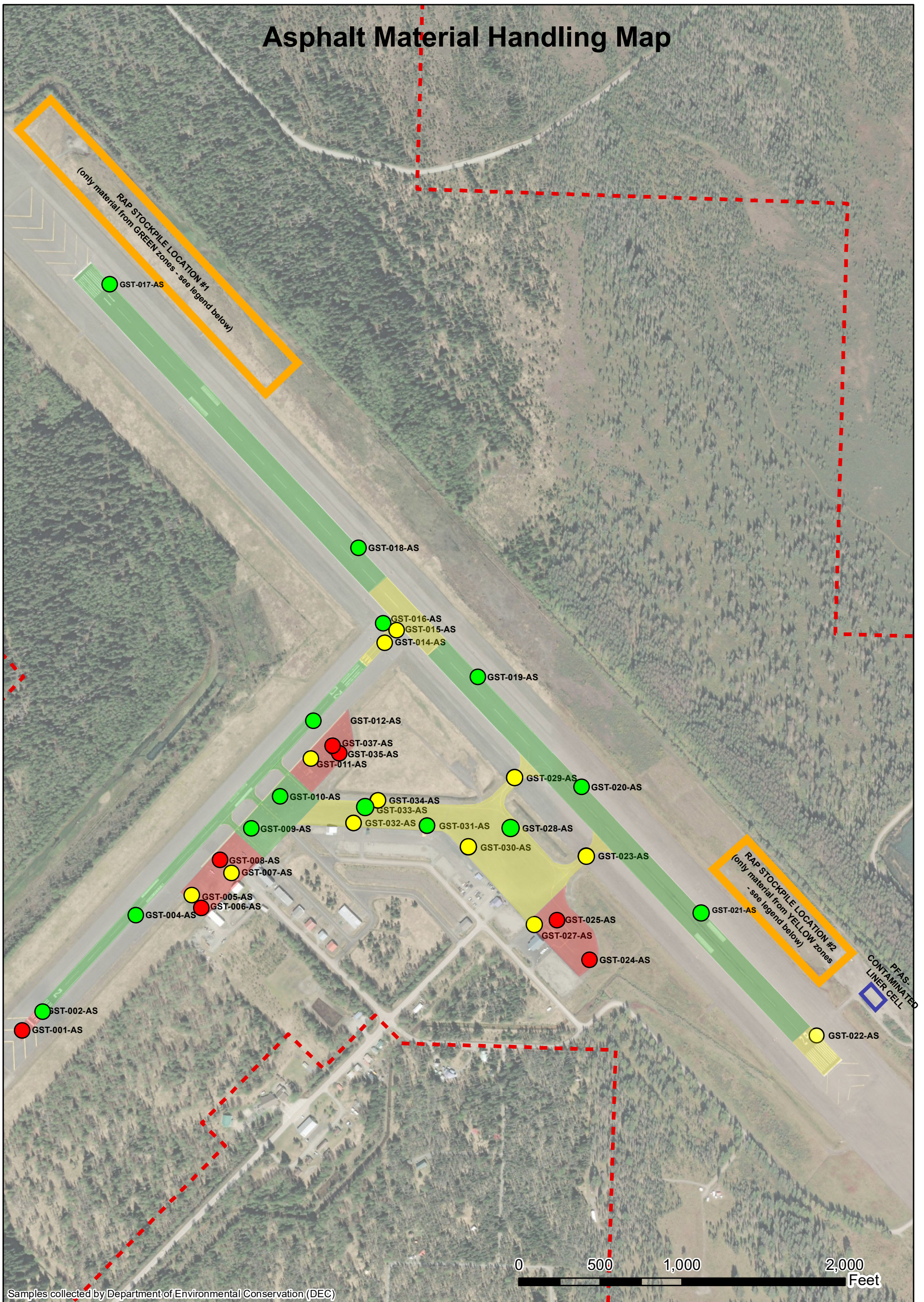


# Asphalt Material Handling Map



## LEGEND

- Results Pending
- PFAS Not Detected
- PFAS Detected Below Regulatory Limit
- PFAS Detected Above Regulatory Limit
- Airport Property Boundary
- Asphalt may be: 1) recycled into new asphalt, 2) may be blended into the base, 3) may be used as a pad under the PFAS-contaminated liner cell, or 4) stockpiled unlined in RAP Stockpile Location #1
- Asphalt may be: 1) blended into the base in area generated, 2) may be used as a pad under the PFAS-contaminated liner cell, or 3) stockpiled unlined in RAP Stockpile Location #2
- Asphalt may only be: 1) blended into the base in area generated, 2) placed in G.A. expansion area and must be capped at completion, 3) temporarily stockpiled within the area generated, or 4) contained within the PFAS-contaminated liner cell.

Map source: Esri, DigitalGlobe, GeoEye, Earthstar Geographics, CNES/Airbus DS, USDA, USGS, AeroGRID, IGN, and the GIS User Community

April 19, 2021